



NOC2L Polyclonal Antibody

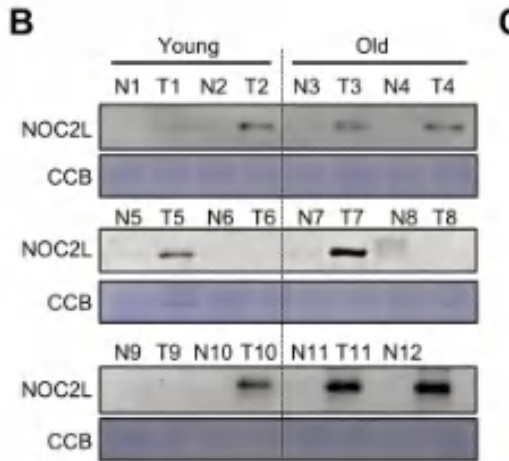
| | |
|----------------------------------|--|
| Catalog No | YP-Ab-04041 |
| Isotype | IgG |
| Reactivity | Human;Mouse;Rat |
| Applications | WB;IHC;IF;ELISA |
| Gene Name | NOC2L |
| Protein Name | Nucleolar complex protein 2 homolog |
| Immunogen | The antiserum was produced against synthesized peptide derived from human NOC2L. AA range:602-651 |
| Specificity | NOC2L Polyclonal Antibody detects endogenous levels of NOC2L protein. |
| Formulation | Liquid in PBS containing 50% glycerol, 0.5% BSA and 0.02% sodium azide. |
| Source | Polyclonal, Rabbit,IgG |
| Purification | The antibody was affinity-purified from rabbit antiserum by affinity-chromatography using epitope-specific immunogen. |
| Dilution | WB: 1/500 - 1/2000. IHC: 1/100 - 1/300. ELISA: 1/40000.. IF 1:50-200 |
| Concentration | 1 mg/ml |
| Purity | ≥90% |
| Storage Stability | -20°C/1 year |
| Synonyms | NOC2L; NIR; Nucleolar complex protein 2 homolog; Protein NOC2 homolog; NOC2-like protein; Novel INHAT repressor |
| Observed Band | 85kD |
| Cell Pathway | Nucleus, nucleoplasm. Nucleus, nucleolus. Translocates from the nucleoli to the nucleoplasm in presence of several stressors like ultraviolet irradiation and actinomycin-D. Predominantly detected in the nucleoli in non-mitotic cells. Predominantly detected in nucleoplasma in cells undergoing mitosis. |
| Tissue Specificity | Brain,Epithelium,Placenta, |
| Function | similarity:Belongs to the NOC2 family., |
| Background | NOC2 like nucleolar associated transcriptional repressor(NOC2L) Homo sapiens Histone modification by histone acetyltransferases (HAT) and histone deacetylases (HDAC) can control major aspects of transcriptional regulation. NOC2L represents a novel HDAC-independent inhibitor of histone acetyltransferase (INHAT) (Hublitz et al., 2005 [PubMed 16322561]).[supplied by OMIM, Mar 2008], |
| matters needing attention | Avoid repeated freezing and thawing! |



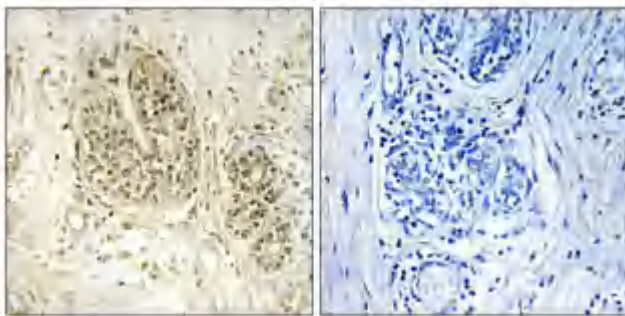
Usage suggestions

This product can be used in immunological reaction related experiments. For more information, please consult technical personnel.

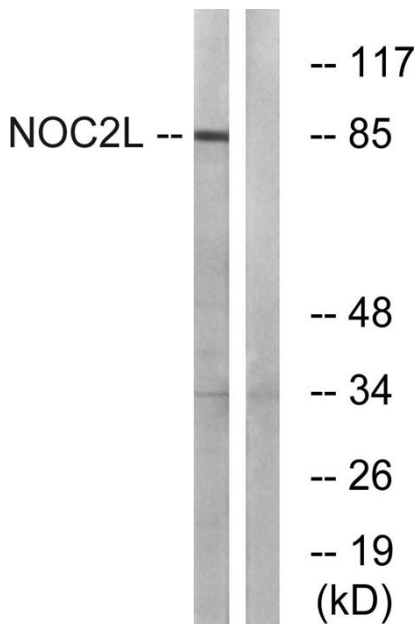
Products Images



Gong, Yanqiu, et al. "Age-Associated Proteomic Signatures and Potential Clinically Actionable Targets of Colorectal Cancer." *Molecular & Cellular Proteomics* (2021): 100115.



Immunohistochemical analysis of paraffin-embedded Human breast cancer. Antibody was diluted at 1:100(4° overnight). High-pressure and temperature Tris-EDTA,pH8.0 was used for antigen retrieval. Negative contrl (right) obtained from antibody was pre-absorbed by immunogen peptide.



Western blot analysis of lysates from MCF-7 cells, using NOC2L Antibody. The lane on the right is blocked with the synthesized peptide.